

## **Take an Aerial Tour of the Overwintering Sites of the Monarch Butterfly in Mexico**

### Instructions and Background

This interactive map will allow you to take an aerial tour through the mountaintops of the Monarch Butterfly overwintering sites in Mexico. This map locates the primary Monarch Butterfly colony locations, the names of mountaintops, meadows, sites of recent illegal logging incidents and the location of the organizations and agencies working in the area.

The digital map can be seen on your personal computer using Google Earth, which can be downloaded for free at <http://earth.google.com/>. Once Google Earth is installed on your computer, you can open the interactive map by simply double clicking on the file, MoreThanMonarchs.orgInteractiveMap.kmz. This file can also be e-mailed to a friend as an attachment.

The KMZ file and the valuable information it contains is being distributed freely. Users are encouraged to consult this map in preparation for their visit to the Monarch Butterfly over-wintering region in Mexico. This interactive map should be useful for visitors, journalists, researchers, agency workers or donors.

We encourage users to update this file with additional information that can be shared with the public. Additional information or pictures that users would like to upload can be added to our [interactive map](#).

Steps to take an aerial tour over the Monarch Butterfly Overwintering Sites in Mexico:

**Step 1.** Install Google Earth on your computer by downloading it from <http://earth.google.com/>

**Step 2.** Open the file: MoreThanMonarchs.orgInteractiveMap.kmz. The file will automatically open Google Earth and appear in the upper left side of the screen under **Places** in the Temporary Places folder. This file contains eight thematic areas: Monarch Butterfly Colonies, Mountains, Illegal Logging, Government Offices, Meadows, Towns, Non-Profit Organizations and Tourism. Users may take one tour for each of these topics, for a total of eight separate tours.

**Step 3.** To begin a tour of the region, select a folder then hit the play button located at the bottom of the Places box or above the Layers bar. The tour will take you to each of the sites in the folder in order of their appearance from top to bottom. When the tour is playing, the site being shown is highlighted.

Complete Description of the Geographic Sites provided in  
MoreThanMonarchs.orgInteractiveMap.kmz

MoreThanMonarchs.orgInteractiveMap.kmz consists of eight folders:

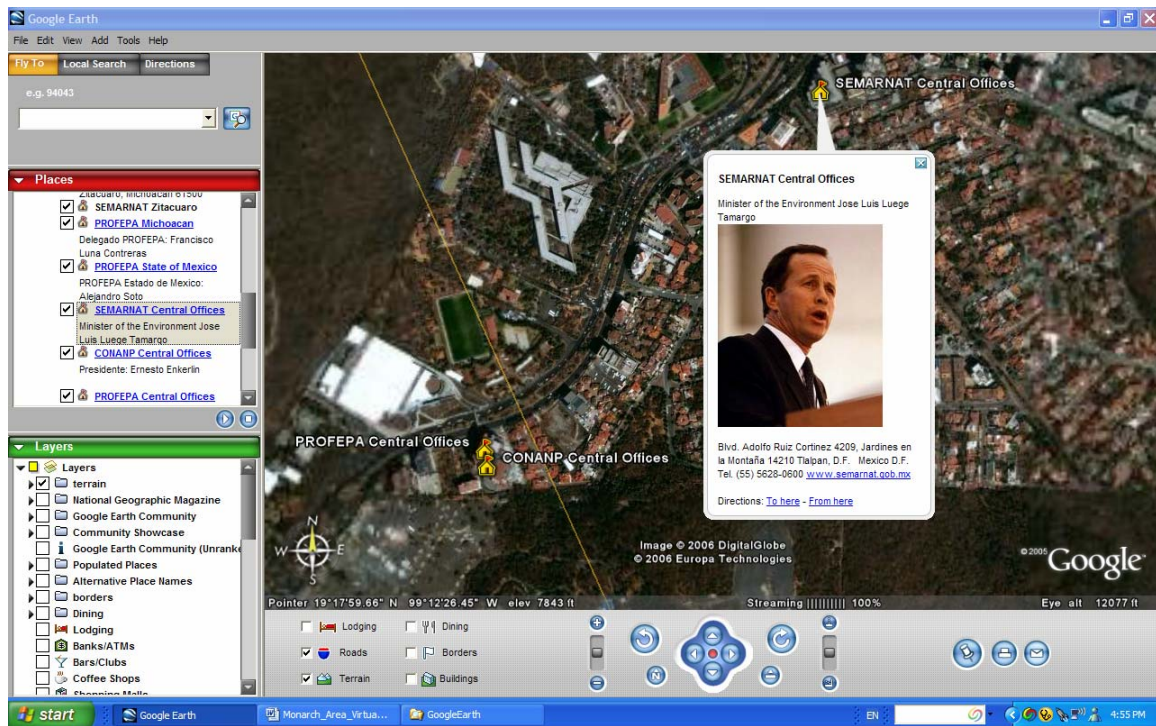
1. Monarch Butterfly Colonies
2. Mountains
3. Illegal Logging
4. Government Offices
5. Meadows
6. Towns
7. Non Profit Organizations
8. Tourism

Each folder contains the several sites of within that topic.

1. Monarch Butterfly Colonies
  - Sierra Altamirano Monarch Butterfly Colony
  - Sierra Chincua Monarch Butterfly Colony
  - El Rosario Monarch Butterfly Colony
  - La Mesa Monarch Butterfly Colony
  - Crescencio Morales Monarch Butterfly Colony
  - Cerro Pelon Monarch Butterfly Colony
  - Piedra Herrada Monarch Butterfly Colony
  - San Francisco Oxtotilpan Monarch Butterfly Colony
  - Las Palomas Monarch Butterfly Colony
  - San Andrés Monarch Butterfly Colony
  - Mil Cumbres Monarch Butterfly Colony
2. Mountains
  - Cerro Pelon
  - El Cacique
  - Sierra Chivatí-Huacal
  - Lomas de Aparicio
  - Sierra El Campanario
  - Sierra Chincua
3. Illegal Logging
  - Illegal Logging in Nicolas Romero 2005-06
  - Illegal Sawmills inside the Reserve 2005-06
  - Illegal Logging of Crescencio Morales 2005-06
  - Illegal Logging of Francisco Serrato 2003-04
  - Illegal Logging of the Federal Property 2004-05
4. Government Offices
  - Monarch Butterfly Biosphere Reserve
  - PROFEPA Zitacuaro
  - SEMARNAT Zitacuaro
  - PROFEPA Michoacan
  - PROFEPA State of Mexico
  - SEMARNAT Central Offices
  - CONANP Central Offices
  - PROFEPA Central Offices
5. Meadows
  - Llano de Villalobos
  - Llano del Establo
  - Llano de las Papas
  - Llano de los Conejos
  - Llano de los Tres Gobernadores
6. Towns
  - Contepec
  - San Jose del Rincon

- Villa Victoria
  - Valle de Bravo
  - Zitácuaro
  - Ocampo
  - El Paso
  - Angangueo
  - Senguio
  - Áporo
  - Ciudad Hidalgo
  - Tuxpan
7. Non Profit Organizations
- Alternare A.C.
  - Biocenosis A.C.
  - World Wildlife Fund (WWF)
  - Bosque Modelo Mariposa Monarca A.C.
8. Tourism
- El Capulin Visitor Entrance
  - La Mesa Visitor Entrance
  - El Rosario Visitor Entrance
  - Sierra Chincua Visitor Entrance

Some sites have additional information. For example, the Government Offices and Non-Profits include the contact information of the organization.



*This file has been created to share geographic information about the overwintering sites of the Monarch Butterfly in Mexico. The locations of certain sites are approximated.*

For questions or comments email [info@morethanmonarchs.org](mailto:info@morethanmonarchs.org)

Developed by:

[www.MoreThanMonarchs.org](http://www.MoreThanMonarchs.org)

[www.MasQueMariposas.org](http://www.MasQueMariposas.org)

With assistance from the EcoLife Foundation [www.ecolifefoundation.org](http://www.ecolifefoundation.org)